

## Health Education England: Shape of Caring

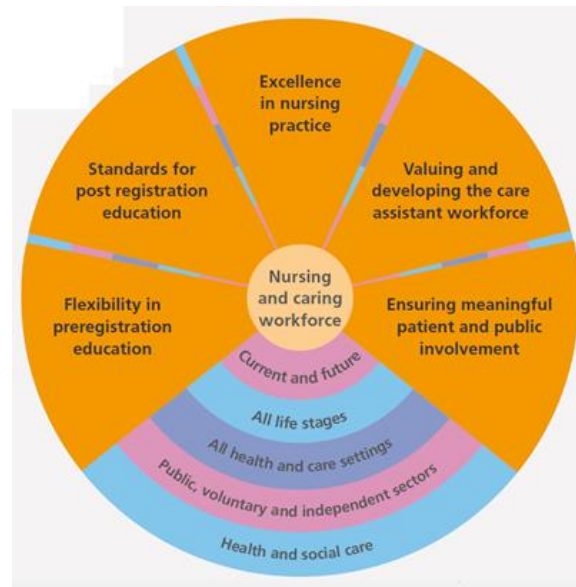


Health Education England (HEE) has a strong commitment to the development of the nursing and caring workforce. In 2015 it held engagement events across England to consider the findings and recommendations of the Shape of Caring: Raising the Bar Review, published in May 2015 under the independent chairmanship of Lord Willis of Knaresborough.

The engagement phase revealed overall endorsement of the Review findings (see the report, pictured left). In the light of this, the HEE Board accepted all 34 recommendations in the Review report at its meeting in December 2015, and initiated action across five Shape of Caring workstreams.

### The five workstreams are:

1. Excellence in nursing practice;
2. Valuing and developing the care assistant workforce;
3. Ensuring meaningful patient and public involvement;
4. Flexibility in preregistration education;
5. Standards for post registration education



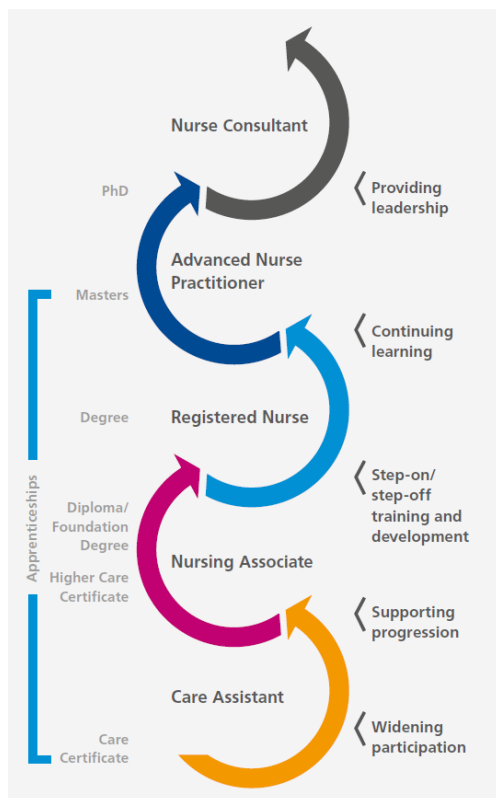
**Aim:** The aim of HEE's Shape of Caring initiative is to develop, implement and monitor a programme of work to deliver the Shape of Caring recommendations to develop the nursing and caring workforce. This work plan is aligned to the HEE Mandate and underpinned by key national priorities and policies, including the integration strategy. High quality care is a priority, along with engagement across HEE offices and with external stakeholders, ensuring that service users are at the heart of our work.

**Leadership:** The initiative is led by Professor Lisa Bayliss-Pratt, Director of Nursing and National Deputy Director of Education and Quality, supported by a Professional Nurse Advisor and Senior Policy Nurses.

**Engagement:** our work takes place through close partnership working with a wide range of organisations, and through discussions and events (online and in person) with health and care staff, managers, leaders, planners and commissioners at all levels, and with patients and carers.

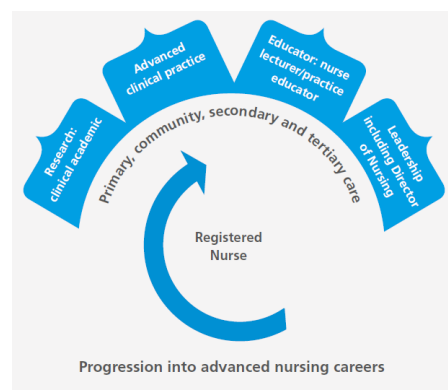
## Key action areas include:

- Publication of HEE's response to the Shape of Caring review (May 2016)
- Development and implementation of a quality approach in nursing and care education linked to the HEE Quality Framework
- Development and testing of the concept of excellence in nursing across the English NHS
- Development of an overarching career and education framework for nursing and caring
- Work to strengthen clinical academic careers
- Promotion of nursing fellowships, including the Older People's Nursing Fellowships
- Development of an e-portfolio for care staff, including an option for the Nursing Associate
- Patient and public involvement: development of a toolkit to support and strengthen the involvement of patients, service users, and carers in nurse education (curriculum development, delivery and assessment processes )
- Development of apprenticeship programmes for nursing



## An overarching career framework

Our aim, in the light of the Shape of Caring recommendations and the feedback we have received, is to support and advance the quality and standards of education from Care Certificate level to PhD and beyond, including clinical academic careers. This gradual transformation will provide a career and education structure that enables the unleashing of potential to the benefit of the health and care workforce, and the patients and communities we serve.



**For more information:** visit our website for publications and updates, and subscribe to our Shape of Caring Newsletter: <https://hee.nhs.uk/our-work/developing-our-workforce/nursing/shape-caring-review>

6 September 2016