

e-Learning for Healthcare

Contents

- [Our work \[1\]](#)
- [Online learning \[2\]](#)
- [Health careers \[3\]](#)
- [News, blogs and events \[4\]](#)
- [About \[5\]](#)

e-Learning for Healthcare (e-LfH) [2] is a HEE programme, working in partnership with the NHS [6] and professional bodies, to support patient care by providing e-learning to educate and train the health and social care workforce.

About us

- e-LfH delivers over 150 e-learning programmes [7] in partnership with the professional bodies such as Royal Colleges and associations, Department of Health policy teams and other arm's length programmes/bodies e.g. NHS England and Public Health England.
- e-LfH programmes contribute to the revolution in UK medical and healthcare training by providing 24/7 access to online, nationally quality-assured materials. Its programmes cover subjects from audiology to anaesthesia, dentistry to dermatology, emergency medicine to end of life care, primary care to prescribing, safeguarding children to statutory and mandatory training.
- The online training sessions enhance traditional learning, support existing teaching methods and provide a valuable reference point. They are designed and built to be engaging and interactive, using quality images, video, audio and animation to help users learn and retain knowledge. Content is presented using various templates such as 'real-life' scenarios, case studies and 'knowledge bites'.
- e-LfH is proud to have achieved many industry awards for best practice in e-learning and to have been quoted as 'transforming medical education for the 21st century'.

User information in 2018

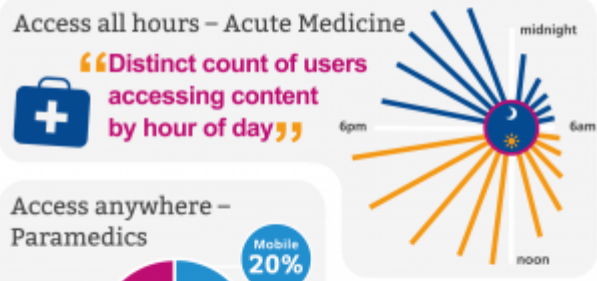


User registration

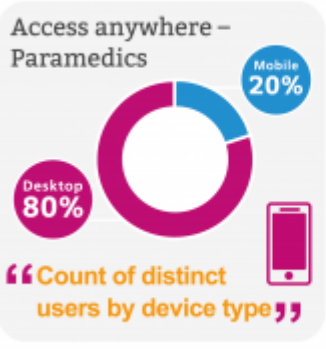
	New registrations	Total registered
Stat & Mand	159,406	176,608
eELCA	43,758	98,627
e-LA	12,558	84,551
Foundation	18,897	53,152
MECC	10,182	43,163
Paramedics	1,977	11,500

41 new programmes launched including...

- Doctors in Training Induction (DIT)
- Alcohol and Tobacco Brief Interventions (VBA)
- Work and Health (PHW)
- Proton Beam Therapy (eProton)
- Sexual Orientation Monitoring Information Standard (SOM)
- Paediatric Surgery (PSU)
- Diabetic Foot Screening - Interactive Assessment (DBF)

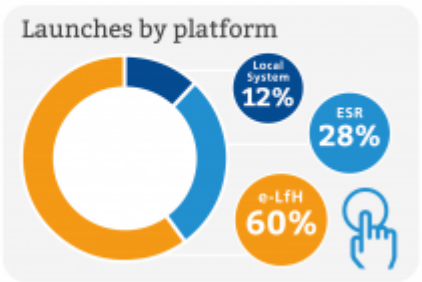


New users: 289,783 (e-LFH Hub only)
Sessions launched: 12,762,527



Developing people for health and healthcare

www.e-lfh.org.uk



© Health Education England

e-LFH is a Health Education England programme in partnership with the NHS and Professional Bodies

Download the infographic [8].

Related Documents

- e-LFH Infographic (.pdf) 5.37 MB [8]

View our vacancies [9]

We have a range of vacancies at HEE

View now [9]

Source URL (modified on 25/06/2019 - 09:12): <https://www.hee.nhs.uk/about-hee/work-us/e-learning-healthcare>

Links

[1] <https://www.hee.nhs.uk/our-work>

[2] <https://www.e-lfh.org.uk/>

[3] <https://www.healthcareers.nhs.uk/>

[4] <https://www.hee.nhs.uk/news-blogs-events>

[5] <https://www.hee.nhs.uk/about>

[6] <http://www.nhs.uk/>

[7] <http://www.e-lfh.org.uk/programmes/>

[8] <https://www.hee.nhs.uk/sites/default/files/documents/e-LfH%20Infographic.pdf>

[9] <http://jobs.hee.nhs.uk/>