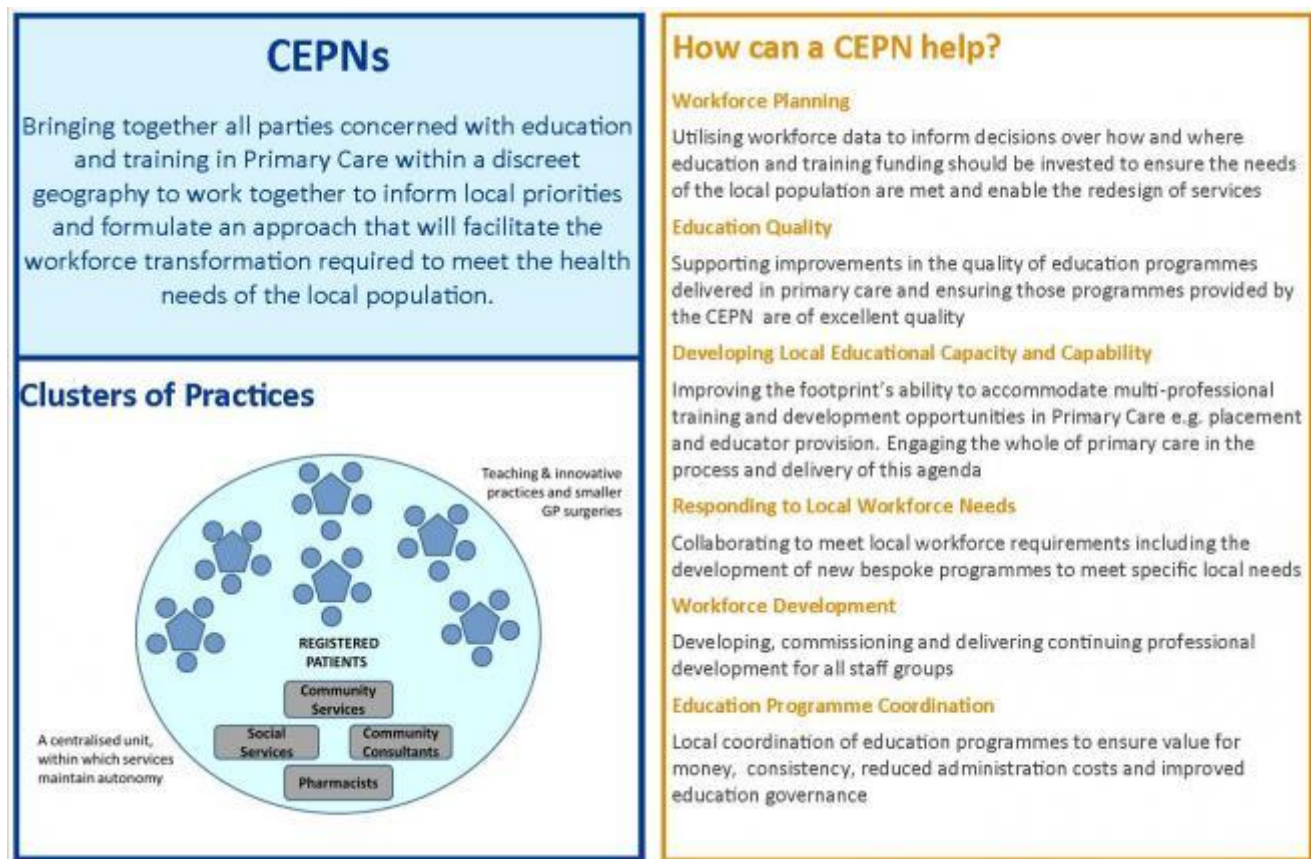


Kent, Surrey and Sussex

Contents

- Our work [1]
- Online learning [2]
- Health careers [3]
- News, blogs and events [4]
- About HEE [5]

Our training hubs bring together all involved with education and training in primary care.



This enables us to:

- Deliver and coordinate educational and training
- Promote multi-professional learning
- Respond to and plan for local priorities and workforce needs
- Work across health and social care
- Support improvements in the quality of education
- Develop local education capacity
- Utilise workforce data
- Provide continued professional development

?. helping to attract, recruit and retain staff in the region and develop a sustainable workforce.

Watch our short film [6] about how primary care is being transformed

Source URL (modified on 21/11/2017 - 14:00): <https://www.hee.nhs.uk/our-work/training-hubs/kent-surrey-sussex>

Links

[1] <https://www.hee.nhs.uk/our-work>

[2] <https://www.e-lfh.org.uk/>

[3] <https://www.healthcareers.nhs.uk/>

[4] <https://www.hee.nhs.uk/news-blogs-events>

[5] <https://www.hee.nhs.uk/about>

[6] <https://www.youtube.com/watch?v=RvNKhot2u94&feature=youtu.be>