

# ACCEND Programme: Overview



# The Aspirant Cancer Career and Education Development Programme (ACCEND)

The overall purpose of the ACCEND programme is:

- *‘To provide clear and transparent guidance and direction on the knowledge, skills and capabilities required by all support workers, nursing associates, registered nurses and allied health professionals who care for people affected by cancer in generalist and specialist cancer services and roles as part of multi-professional teams across the four UK nations.’*

The programme is funded by NHS England (formerly Health Education England) and in collaboration with several stakeholders.



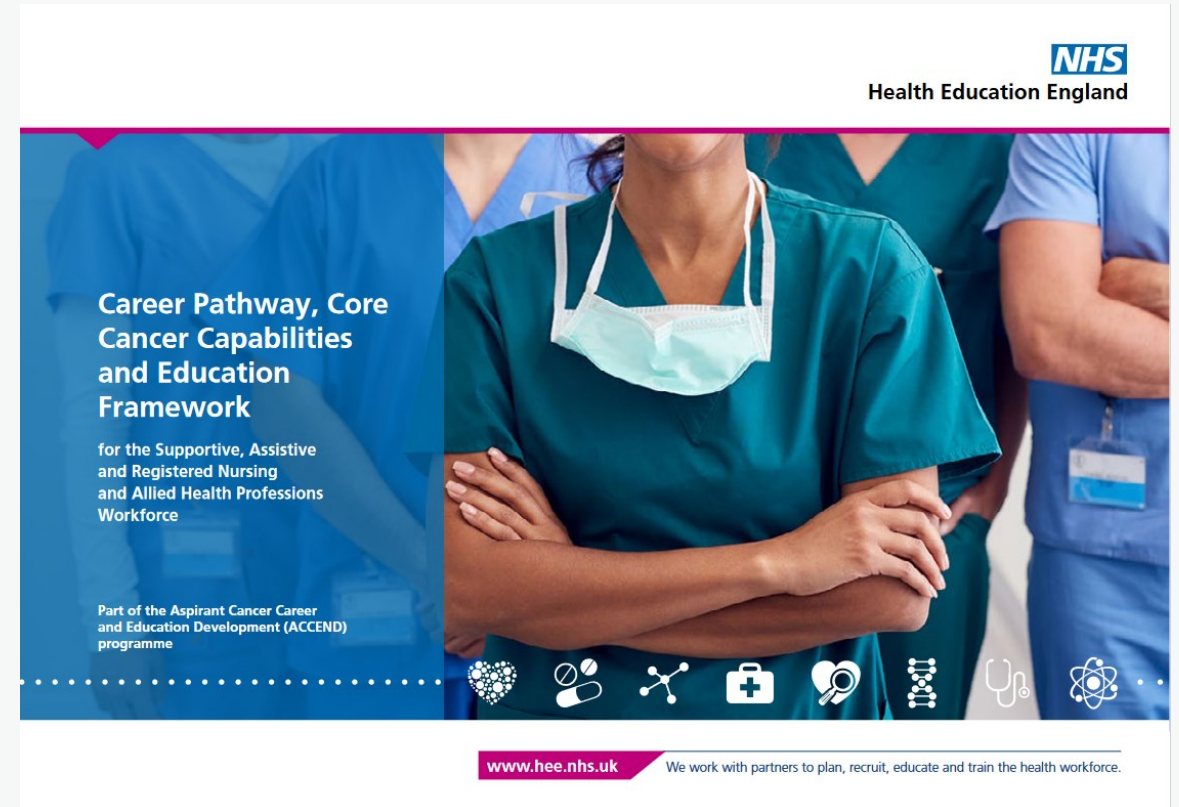
# Engagement



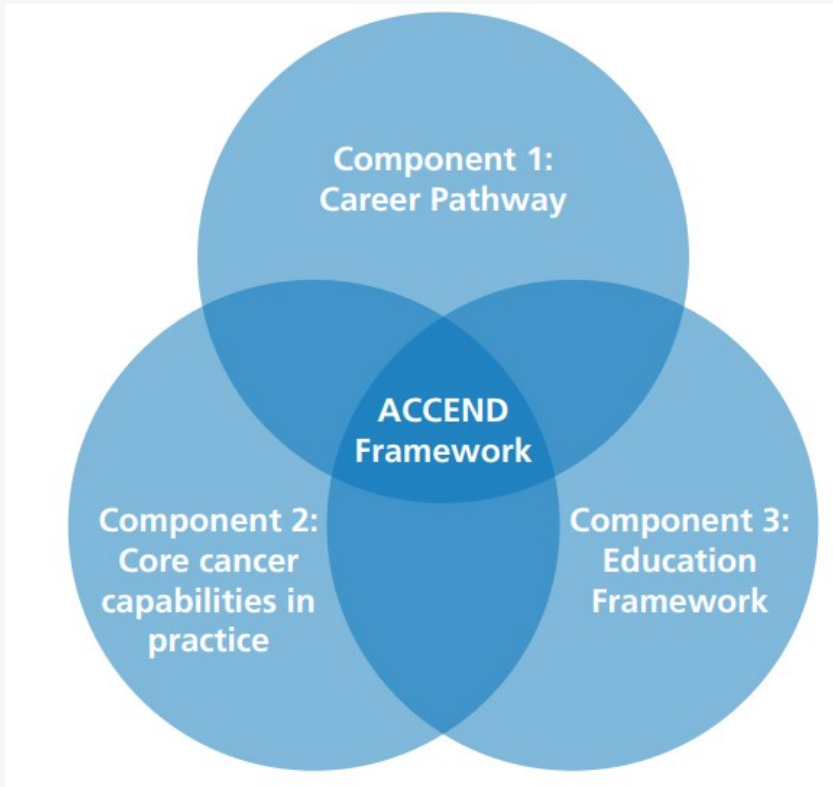
# The Framework

In January 2023 the [Career Pathway, Core Cancer Capabilities and Education Framework](#) was published.

This is a landmark publication that gives the workforce a nationally agreed career and education framework, underpinned by capabilities in practice (CiP), for the first time.



# The Framework: Three Components



## 1. Career pathway

- i. Levels of practice

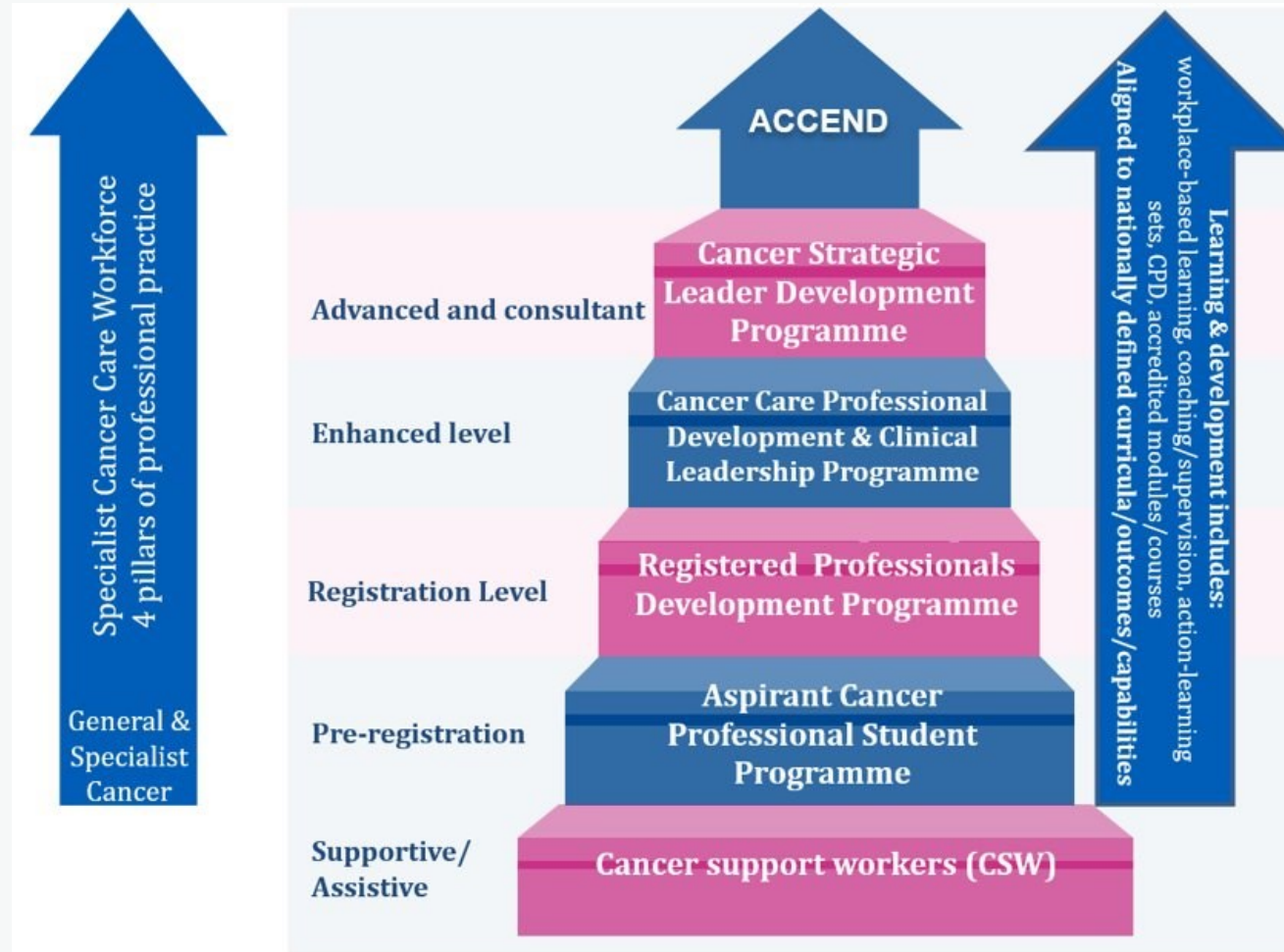
## 2. Core cancer capabilities in practice

- i. Colour-coded for each level of practice

## 3. Education framework – setting standard

- i. Foundations in cancer care (Supportive, Assistive, Pre-registration)
- ii. Fundamentals in cancer care (Registration – Consultant levels)
- iii. PGCert (QIS)/Diploma
- iv. Aligns to national frameworks for advanced and consultant levels
- v. Pre-registration level: [Cancer Nursing Careers – e-learning for healthcare \(e-lfh.org.uk\)](http://e-lfh.org.uk)

# The Framework: Levels of Practice



# The ACCEND Cancer Hub



The overall purpose is provide a 'go-to' place for the cancer workforce, or anyone in a healthcare role that supports people with cancer, at any level of practice. On the ACCEND Cancer Hub you will find key information on education & training, building of skills & capabilities, and information & advice on career pathways.

<https://www.e-lfh.org.uk/programmes/aspirant-cancer-career-and-education-development-programme-accend/>



# Thank you for listening

Please visit our website or contact us for more information.

[england.accend@@nhs.net](mailto:england.accend@@nhs.net)

<https://www.hee.nhs.uk/our-work/cancer-diagnostics/accend>