

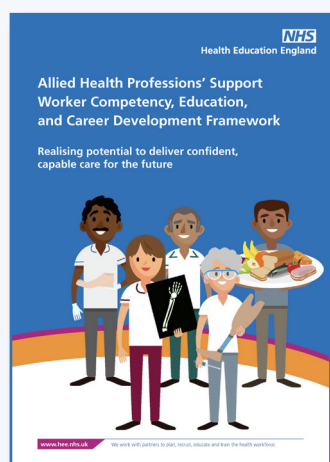
Allied Health Professions support workforce

HEE's national allied health professions (AHP) support workforce programme has been established to provide national leadership and support on recognising, developing, and expanding the non-registered AHP workforce.

Support workers, senior support workers, assistants and assistant practitioners work in, with and alongside the allied health professions (AHPs), providing high quality, life changing care across a range of acute and community services.

Our work will ensure that:

- Patients and service users have access to skilled and consistently well-trained support workers who have a defined role within their team
- AHP support workers have access to development structures that provide opportunities to follow rich and rewarding career pathways
- services can address the current variation in support worker roles, banding and progression
- support worker roles can be at the heart of improvements in service delivery and transformation, including new models of care.



Resources include:

- AHP Support Worker Competency, Education and Career Development Framework
- Readiness toolkit
- AHP support workforce – grow your own workforce strategies
- Making learning work for AHP support workers
- AHP support workforce – understanding education, qualifications and development
- Support Worker Education Qualification Mapping Tool

For more information please scan the QR code.

