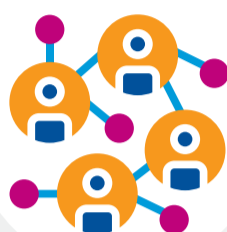


## Supporting provision of high quality education and training to support workforce expansion in Children and Young People's Mental Health services



### What we do

The HEE national Children and Young People's Mental Health (CYPMH) programme works through a network of regional leads across the country to support local systems to deliver key workforce education and training priorities.



### Aims

- ✓ Deliver CYPMH workforce expansion- 5YFV targets (1,700 new therapists, on track to achieve by March 2020, training for 3,400 existing staff in CYPMH services)
- ✓ Implementation of the **Government's Green Paper**: 'Transforming CYPMH service provision' published July 2018.
- ✓ Addressing CYPMH priorities outlined in the **NHS Long Term Plan and Implementation Plan**, between 2019/20 and 2023/24.



### MHST Implementation

**Nationally driven collaboration between health and education sectors (HEE, NHSE and DfE)**

July 2018 'Transforming CYPMH service provision'. Providing training and Mental Health Support Teams (MHSTs) in schools to deliver CYPMH workforce expansion training nationally; Educational Mental Health Practitioners and MHSTs covering 25% of England and four week waiting time for access to CYPMH services, pilot in progress.

2019/2020 650 extra EMHP staff in training or qualified.



### Five Year Forward View

2019/2020 1,700 new therapists trained; 3,400 existing staff upskilled in Mental Health competencies.



### Looking ahead

2023/24: CYP MH priorities outlined in the NHS Long Term Plan and Implementation Plan and HEE will support training in:

- 18-25 services
- Eating disorder services
- Crisis, trauma
- Inpatient services

- ✓ In England today, approximately one in eight\* children and young people aged 5 to 19 have a diagnosable mental health problem, (other groups experience higher rates eg LGBTI+ individuals, or those with special educational needs).

- ✓ 2016 – 2018: 23% growth in NHS employed CYP MH workforce: NHS are the primary provider of community-based MH services, accounting for 74% of CYPMH total staff

- ✓ NHS-funded CYPMH services have achieved an access rate of 33.1% nationally\* (\*against 2018 ONS prevalence data)