



**Local
Delivery
Plan
2015/16
SUMMARY**

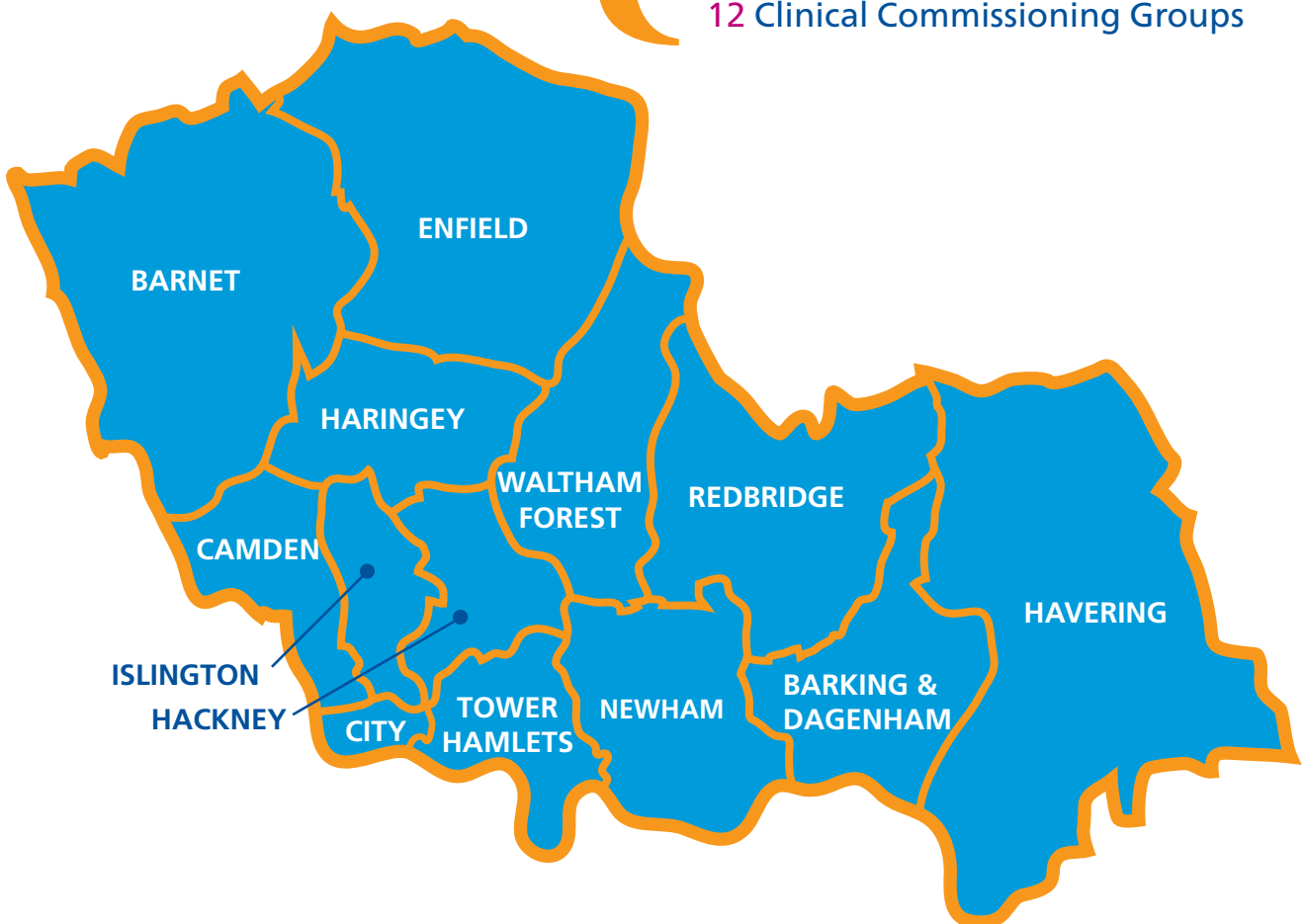


Contents

Health Education NCEL's geography	1
Our mission	2
Health Education England priorities	2
HENCEL medical commissions 2015/16	3
HENCEL healthcare professionals commissions 2015/16	3
HENCEL local delivery plan 2015/16	4
Delivering person-centred care	5
Supporting services and pathways	5
Attracting and retaining the right people	6
Investing in learning and innovation	6
Building a cohesive organisation	6
2015-16 projections by funding stream (£m)	7
Key events in 2015/16	8

Health Education NCEL's geography

3.1m people
£420m budget
77,400 staff in post
13 London boroughs
6,400 medical trainees
3,600 non-medical trainees
13 Health and Wellbeing Boards
12 Clinical Commissioning Groups



Health Education England (HEE) is the national NHS organisation responsible for the education and training of all current and future NHS employees. HEE exists for one reason: to improve the quality of care delivered to patients.

Health Education North Central and East London (HENCEL) is one of 13 local committees of HEE known as a Local Education and Training Boards (LETBs). HENCEL is responsible for ensuring that high quality education and training is provided to all health professionals including the next generation of doctors, dentists and nurses in North Central and East London.

Our mission



“ To promote excellence in healthcare education, training and workforce development to ensure the best possible health outcomes and experience for the patients and population of North Central and East London. ”

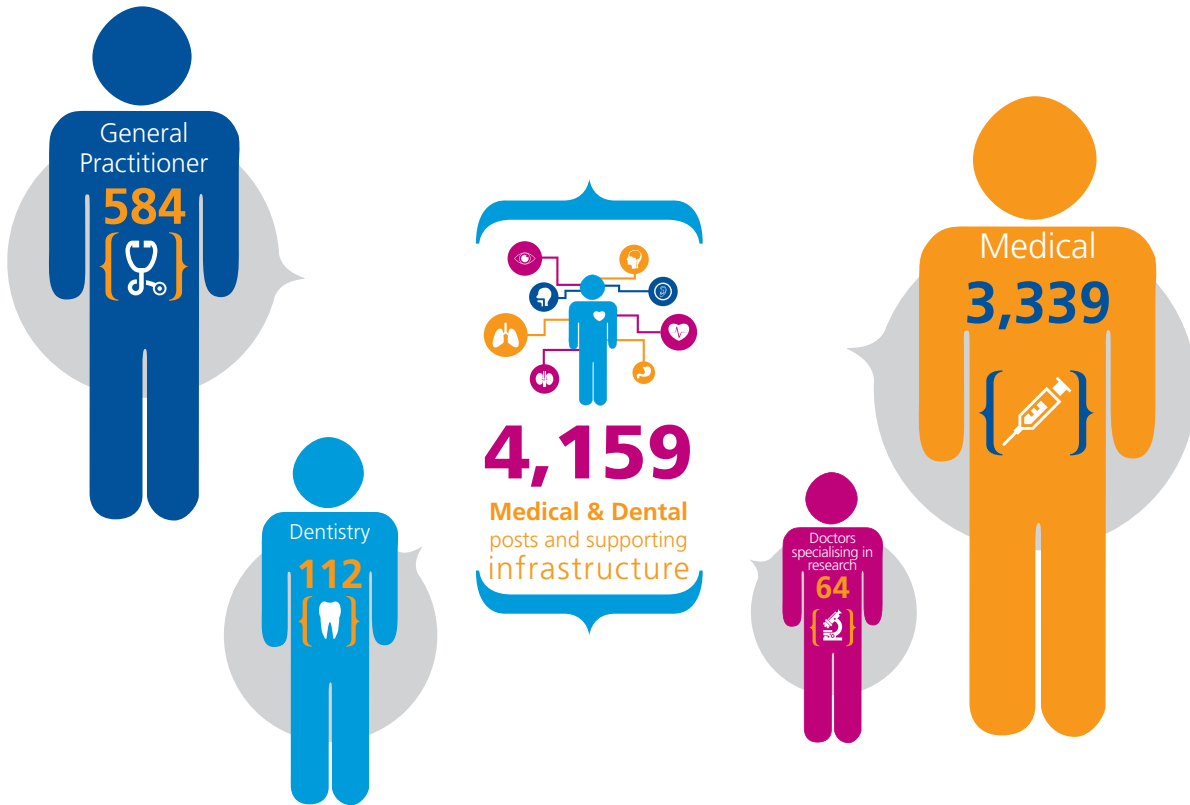
Health Education England priorities

Health Education England has key priorities to deliver in collaboration with their 13 Local Education and Training Boards (LETBs). These include tackling some of the current challenges for the wider NHS and taking responsibility for the education, training and personal development of every health professional. Making sure they have the right skills, values and behaviours, exist in the right numbers, at the right time and in the right place for patients.

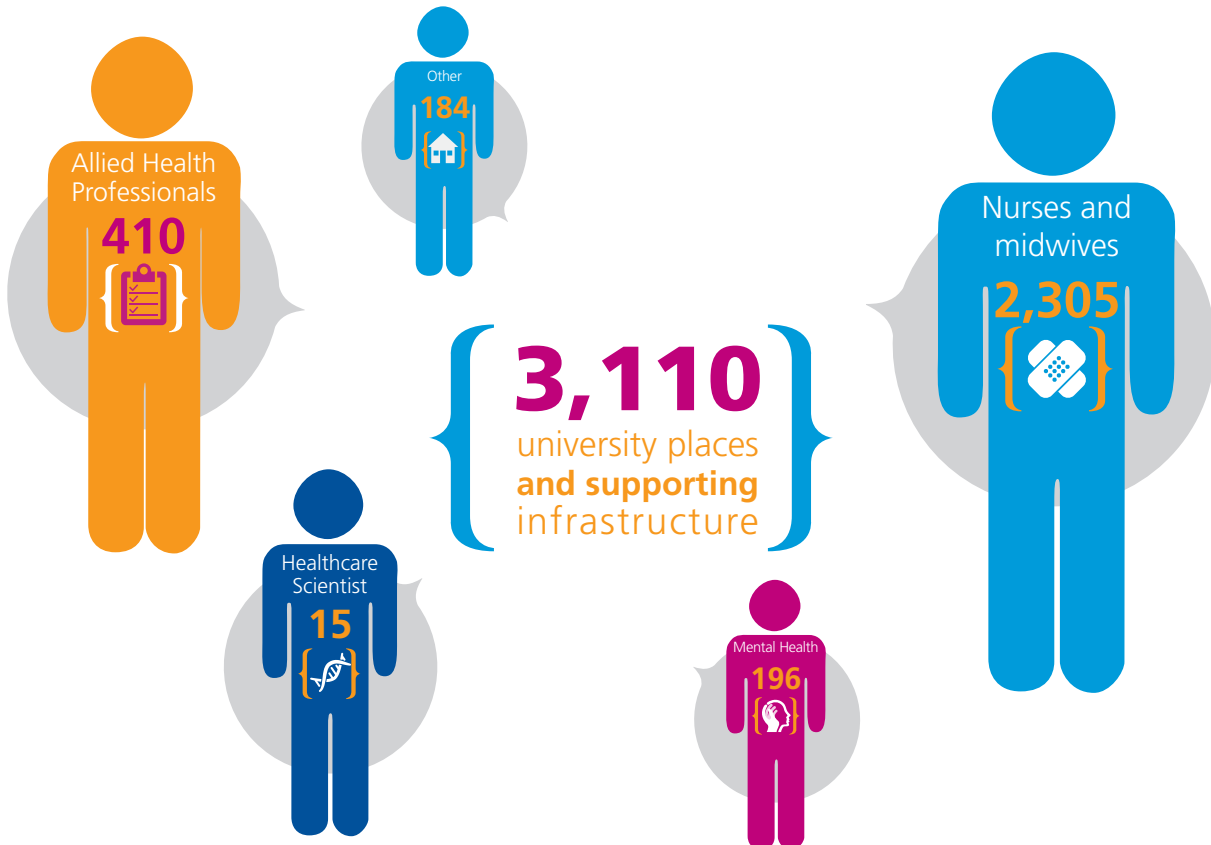
In addition, the Government’s refreshed Mandate for Health Education England was published on 30th March 2015. This document clearly highlights certain key priorities for HEE in developing the workforce with a specific focus on access to GPs and community based services to meet the needs of patients.

Each year HENCEL publish their Education plan which details the number of training places required for 2015/16 in the local area. It is designed with local NHS organisations and professions as well as universities, ensuring we purchase the right training places in the area ensuring the future workforce meets the needs of patients. Our 2015/16 plan includes 4159 medical and dental training places and 3095 places for other healthcare professionals such as nurses and midwives.

HENCEL medical commissions 2015/16



HENCEL healthcare professionals commissions 2015/16



HENCEL local delivery plan 2015/16

To complement developing the future workforce through our education plan, our local delivery plan sets out how we deliver the Mandate priorities and improve the quality of education and training. This is set out across five key areas:

} **Delivering person-centred care**

} **Supporting services and pathways**

} **Attracting and retaining the right people**

} **Investing in learning and innovation**

} **Building a cohesive organisation**

Delivering person-centred care

Person-centred care sees patients as equal partners in planning, developing and assessing care to make sure it is most appropriate for their needs. We will continue to work with our Community Education Provider Networks to ensure that healthcare staff receive the right training to enable a range of self-care and health coaching across NCEL to help patients manage their own health conditions.



Supporting services and pathways

HENCEL will continue to work with local healthcare providers (hospitals, GPs etc.) to ensure that the training we pay for matches the needs of the local population, including any major changes to the way services are delivered, so patients can receive the right care at the right time. We will continue to support the programme to up skill practice nurses (those working in GP surgeries) to allow them to prescribe in addition to chronic disease management.

Attracting and retaining the right people

HENCEL will ensure that all people entering NHS funded posts embrace the values of the NHS and will assess these employees throughout their careers. We'll also widen the number of apprenticeships in the local area, aimed at aspiring young people looking for jobs within the NHS and their local community.



Investing in learning and innovation

HENCEL will work with Universities to ensure that all the training and education we buy for healthcare staff is of the highest quality and should improve the patient experience and delivery of safe healthcare.

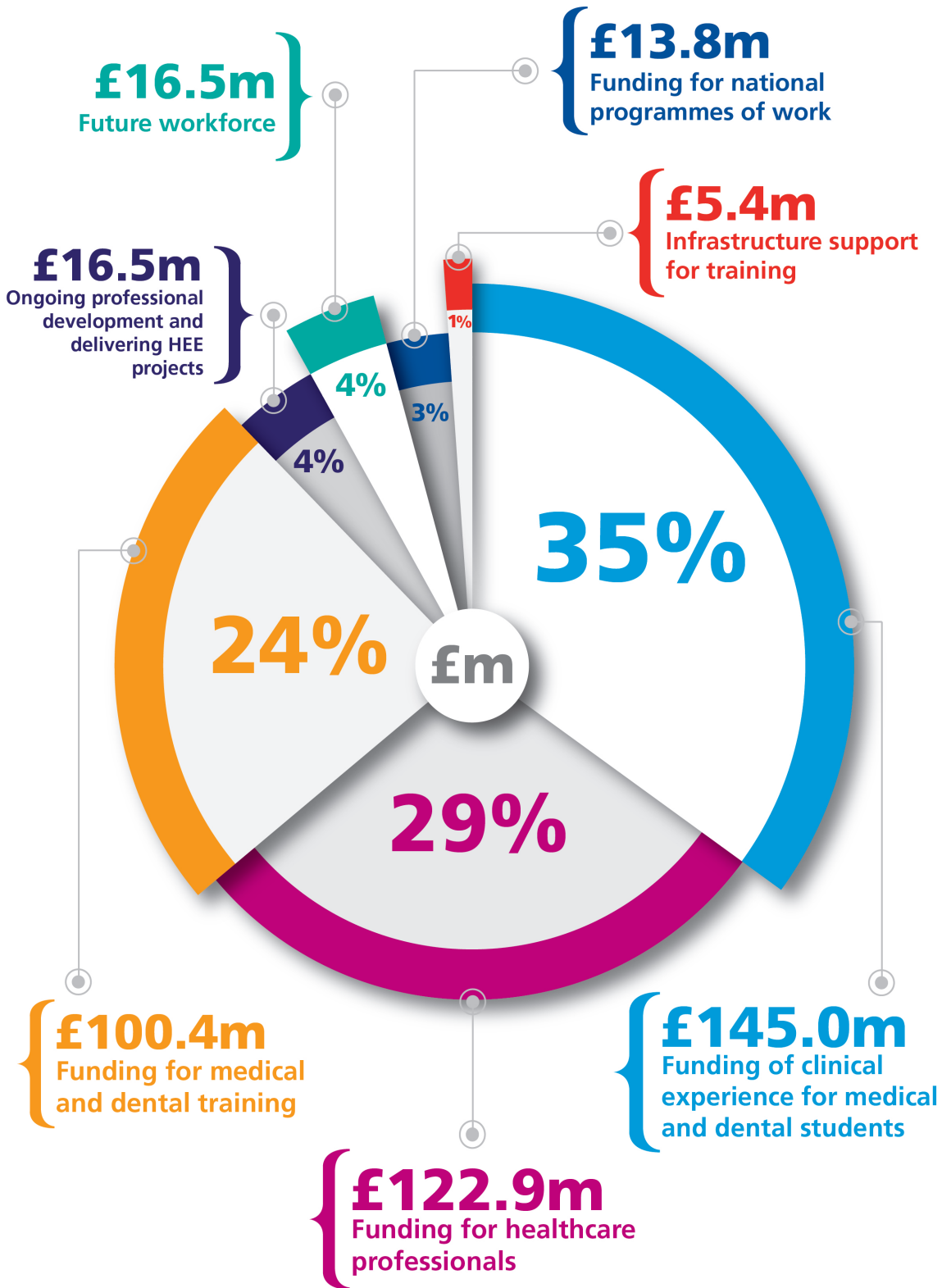
We will work with the Tower Hamlets Vanguard to review new care models which will shape the workforce of the future ensuring patients receive seamless well managed services.



Building a cohesive organisation

HENCEL will continue to develop as an organisation, ensuring we are open and transparent and outcomes focused and aim to get the very best value for money in everything that we do.

2015-16 projections by funding stream (£m)



Key events in 2015/16



Patient Safety and Quality Improvement

Friday 3 July

University Lecturers, Nursing Directors, Practice Education Managers and students come together to learn from each other and to think about Patient safety and Quality Improvement principles can become a fundamental part of pre-registration nursing and midwifery training.



Pan-London Practice Assessment Document (Midwifery)

Wednesday 15 July

The launch of the new pan-London Practice Assessment Document for Midwifery which will feature sessions from the development team, students and senior figures in midwifery.



GP Trainee Conference: Pan London

Tuesday 21 July

This is a one-day event bringing together GP trainees from across London to network, share experiences and best practice, and demonstrate their achievements. It is a celebration of the rich and vibrant community of education and training in the capital.



London Health Libraries NHS/HE Conference

Thursday 19 November

This event is for the NHS and HE library sectors in London and the Kent, Surrey and Sussex area. Previous themes included Knowledge for Healthcare and Innovation in Health Library Services.



HENCEL Quality Awards

Tuesday 8 December

The Quality Awards will open for nominations during summer 2015. The awards offer an opportunity to celebrate excellence across the area, bringing different organisations together to congratulate groups and individuals on their innovation and success.



Would you like to know more or get involved?

Health Education NCEL works in partnership with NHS employers, universities, students, patients, NHS employees and third sector and voluntary organisations across North Central and East London. Partnership working is essential to successfully deliver of our vision and mission.

If you would like to find out more or give us your feedback please contact us.

Email: info@ncel.hee.nhs.uk

Visit: www.ncel.hee.nhs.uk

Follow us on Twitter: [@HE_NCEL](https://twitter.com/HE_NCEL)