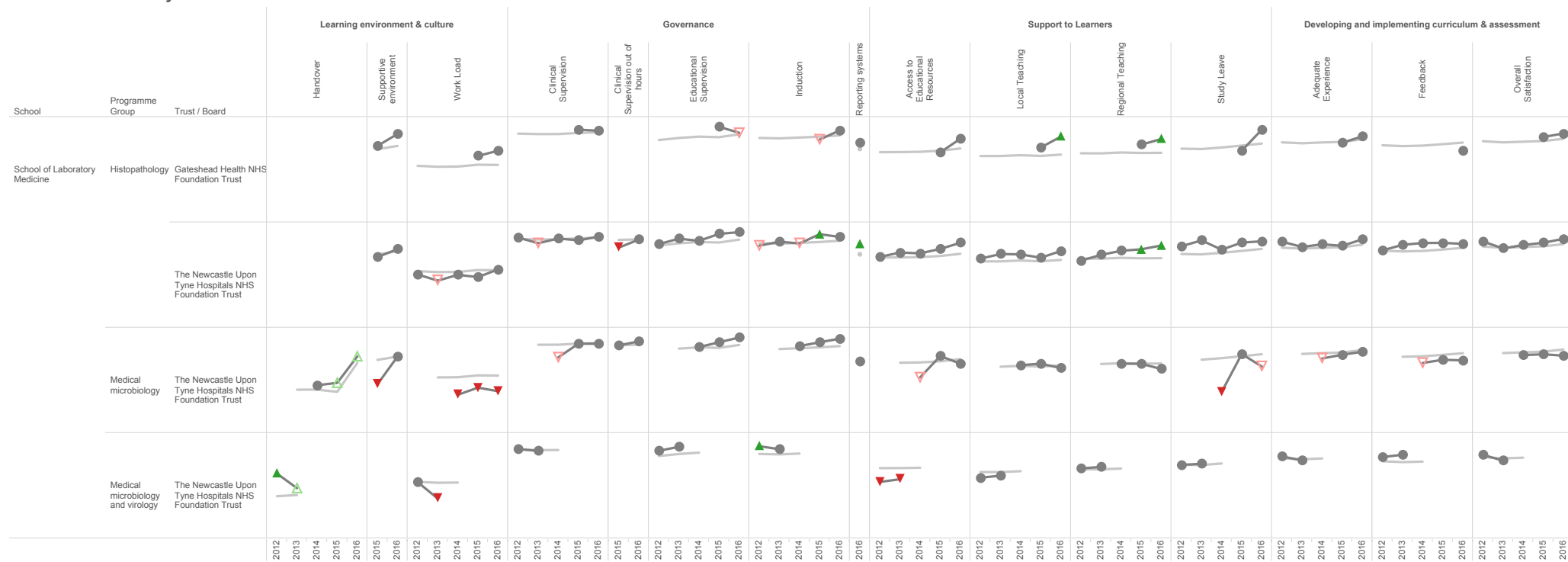


Programme Group by School
Trend visualisation of the GMC Survey Indicator Scores for 2012, 2013, 2014, 2015 and 2016
School of Laboratory Medicine



The plots above show the GMC Survey mean score values for 2012, 2013, 2014, 2015 and 2016. The report provides results for trainee responses based on their programme group linked to the School the Programme is linked to as well as the Trust or Board where they were working at the time of completion (e.g. the O&G Programme report includes O&G trainees only). The purpose of this is to show annual trends in the mean score. The dark grey line shows the mean score given by the respondents in the described group. The pale grey line shows the national average score for the benchmark group, which is used to determine the outcome status. The colour and shape of the flag shows the outcome status (if any) of the response and is described in the key.

- Outcome**
- ▲ Above
 - ▼ Below
 - ▽ In Q1 but not a below outlier
 - △ In Q3 but not an above outlier
 - * N less than 3
 - Within IQR
- Outcome**
- ▲ Above
 - ▼ Below
 - ▽ In Q1 but not a below outlier
 - △ In Q3 but not an above outlier
 - * N less than 3
 - Within IQR
- Measure Names**
- Mean
 - National Mean