

South West COVID-19 Workforce and Training Cell Bulletin – 15 May 2020

This weekly bulletin aims to provide a summary of key information and updates on COVID-19 guidance that has been shared to date. It should be read in conjunction with the national COVID-19 advice and guidance hosted by [Health Education England](#) and [NHS England and NHS Improvement](#).

Please note that the south west COVID-19 workforce and training cell is now only operational from 8am – 6pm, Monday to Friday.

[COVID19workforce.sw@hee.nhs.uk](mailto:covid19workforce.sw@hee.nhs.uk) / Out of hours emergencies: 01454 252 679

This bulletin covers:

- [Risk reduction framework for staff at risk of COVID-19](#)
- [Movement of agency staff](#)
- [Occupational health departments](#)
- [Key worker guidance and family support package](#)
- [Call for evidence](#)
- [Joint statement on planned placements in England](#)
- [STP trainees](#)
- [Nursing](#)
- [Physician Associates](#)
- [Doctors returning to training](#)
- [COVID-19 patient information for vulnerable groups](#)
- [e-Learning for Healthcare \(e-LfH\)](#)

Risk reduction framework for staff at risk of COVID-19

This [framework](#) has been developed following engagement with a wide range of experts, aiming to better protect our workforce and maximise the ability of the NHS to deal with current pressures. This is a consensus, reflecting differing perspectives on a very complex situation.

Implementation will require significant support to assist with planning and provision of occupational health assessments and Trusts will need specialist occupational health support and advice to apply the guidance fairly. This is the first attempt to create such a risk reduction framework, with currently available evidence, and will be reviewed and updated considering any new evidence.

This framework provides a baseline but remains fluid and we are expecting guidance to interpret the framework. If you have any questions, please contact [Kate Milton](#).

Movement of agency staff

The SW Regional Clinical Cell raised a concern that the movement of the temporary workforce, in particular agency staff, between organisations may carry a small increase of risk transmitting the COVID-19 virus, particularly where PPE equipment differs between organisations. As a result, it may be preferable to use the returner workforce in the first instance and when agency staff are required, to block book them in order to minimise movement. Equally, where feasible, to ensure agency staff are deployed to work in low risk areas and, if they are required to work in red zones, that they have they have been properly fit tested for filter masks used in your organisation.

Occupational health departments

NHS England and NHS Improvement have extended their support to occupational health departments. Full information is attached separately to this bulletin. In summary:

- There are new suppliers on the national Dynamic Purchasing Supplier (DPS) Framework for Occupational Health (OH) and Employers Assistance Programme (EAP)
- There is no need to tender for these services if you use the DPS Framework.
- Joint purchasing across organisations or STPs/ICSs is encouraged
- The framework will be in place until December 2020, when it will be reviewed.

To take part you will need to go to the NHS Health at Work website:

<http://www.nhshealthatwork.co.uk/bulletin-alerts.asp>

If your organisation is a member of the NHS Health at Work Network, you will already have access to the framework at this link:

<https://www.nhshealthatwork.co.uk/covid.asp>

Key worker guidance and family support package

We recognise that in this current pandemic, our key worker parents and carers may be facing the additional pressure of having difficult conversations with their children and families on their role as a key worker, and how this may impact on the safety and dynamics of their family. In collaboration with clinicians at the Tavistock and Portman NHS Foundation Trust, NHS England and NHS Improvement have published some written and audio guidance for key workers that will support them in having those difficult conversations, including considering when is the best time to talk to your children about your role, and how to explain why you are still working when other parents might be at home.

It is important that we share these tools widely with all staff as it's an opportunity to redress inequalities in the system and support parents to be able to frame their

conversations appropriately to the age of their children and manage the anxieties. You can listen to the podcast and read the supporting information [here](#).

Call for evidence

As the NHS begins to plan the restart, recovery and reform of core business, we need to ensure that we do not lose the innovations, opportunities and benefits from the collective actions and decisions taken to support the coronavirus pandemic.

As part of embedding the positive changes and innovations to achieving this during the pandemic HEE are keen to hear the views and insight from partners and stakeholders to questions such as:

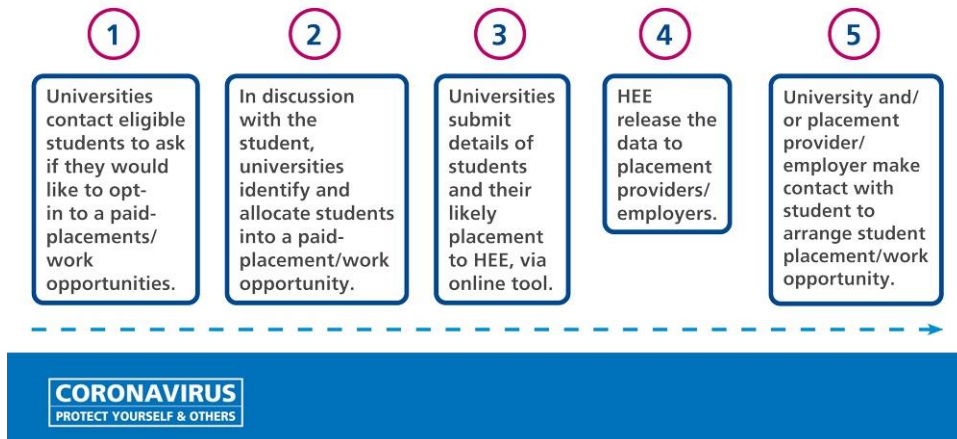
- How was the urgent effort to **deploy** our workforce during the COVID-19 surge achieved?
- What did we do that was **different** that aided the rapid response?
- What **opportunities** has the crisis highlighted that we should grasp?
- How can we use learning now to build a **resilient** future in workforce and education and training terms?
- What are the implications of COVID-19 for our workforce and education **reform**?
- What **positive changes** have we made in education and training that we do not want to lose going forwards?

If you would like to contribute your views or find out more, please email at C19Lessons@hee.nhs.uk

Joint statement on planned placements in England

HEE along with the Council of Deans of Health, the Nursing and Midwifery Council (NMC), the Health and Care Professions Council (HCPC) and NHS Employers has published a joint-statement, expanding on the previous [NMC](#) and [HCPC](#) emergency measures to support the COVID-19 response, to clarify how planned placements for nursing, midwifery and allied health students should be used. You can view the joint statement [here](#).

Thank you to all students who have opted in to take up a paid placement to help fight COVID-19. The image below shows the process from opting in through to deployment:



STP trainees

Joint HEI / NSHCS webinar for STP trainees: on Thursday 14 May 2020 at 2pm Carol Ainley, Director of Manchester Academy for Healthcare Scientist Education, will be joining senior colleagues from the National School, to answer questions about the academic aspect of the STP.

<https://bit.ly/2W8UNdt>

STP assessment and completion in 2020 for third year STP trainees and training officers: on Friday May 15th at 2pm Jane Lynch, Training Programme Director of the STP, will be joined by Sandie Gay, Head of Education & Assessment at the NSHCS, will be hosting a webinar aimed specifically at third year trainees and training officers to answer questions about completion and the alternative to the OSFA, the Independent Assessment of Clinical Competence.

<https://bit.ly/3fquVBt>

Nursing

Tuesday 12 May, the 200th anniversary of Florence Nightingale's birth, marked International Nurses Day, a chance to celebrate the role of nurses as clinicians, leaders, researchers and educators across the globe. Many of the planned celebrations were postponed as a result of COVID-19 but Deputy Chief Nurse for England and HEE's Chief Nurse, Mark Radford, led [virtual celebrations](#) and premiered this [film](#) to mark the occasion.

Physician Associates

The Faculty of Physician Associates (PAs) have set up a COVID-19 special temporary register for graduate student PAs who have completed their University programmes but have yet to pass the PA national exam. Find out more at

www.fparcp.co.uk/covid-19

Doctors returning to training

If you missed the knowledge refresher and wellbeing webinars for doctors returning to training - [you can now watch them online](#).

COVID-19 patient information for vulnerable groups

PHE, NHSE/I and HEE's Library and Knowledge Services have worked with the Patient Information Forum to collate trusted, accessible online patient information resources for all frontline staff across health, social care and voluntary organisations who work directly with patients and family groups. <https://library.nhs.uk/coronavirus-resources/>

e-Learning for Healthcare (e-LfH)

Coronavirus (COVID-19) e-learning programme: Earlier this week the e-LfH COVID-19 e-learning programme reached the milestone of one million session launches since it went live in mid-March.

New resources for radiographers have recently been added to the programme. The content includes minimising risk using PPE and infection control, how to safely use mobile equipment and optimising image quality. The resources can be accessed [here](#).

Three new training videos have also been added to the programme for staff working in a critical care setting, an acute hospital setting and to support staff with difficult conversation and end of life care.

Guidance for psychologists has been added to the programme: "Adaptations to psychological practice: Interim guidance during Covid-19 pandemic" can be accessed [here](#). For more information about the programme select [here](#).

The Learning Hub – COVID-19 release: HEE's Technology Enhanced Learning team will be releasing the Learning Hub, with core functionality, at the end of May 2020. The Learning Hub is being released to support the Coronavirus (COVID-19) response by enabling the health and care workforce to share and access resources during the pandemic.

The Learning Hub will be a new digital platform that will provide easy access to a wide range of resources that are pertinent to education and training in health and care. Users will be able to contribute digital resources (including video, audio, images, documents, web links, articles etc) and search and access the variety of learning resources that will have been contributed by stakeholders and the health and care workforce to support system readiness and recovery from the pandemic.

New features will frequently be released in line with the original plan for the functionality of the Learning Hub in its Beta phase.

The Learning Hub will add to HEE's existing suite of platforms and complements the major role the e-Learning for Healthcare Hub is playing as part of the COVID-19 response.

If you would like to know more about this release of the Learning Hub follow @HEE_TEL on Twitter, read the [blog](#) and look out for regular updates over the next few weeks.

FOR ANY QUERIES OR ISSUES, PLEASE EMAIL:
COVID19WORKFORCE.SW@HEE.NHS.UK

Produced by Health Education England, NHS England and NHS Improvement – working across the south west